

9.0 CUSTOM SEALS AND PLASTIC PARTS (CLIENT'S REQUESTS)

9.1 PROSEAL



PRO01



PRO02



PRO03



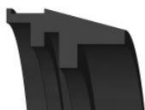
PRO04



PRO05



PRO06



PRO07

9.2 SEALMINAS



SM01

9.3 MASTOR



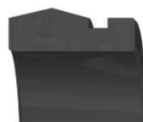
MA01



MA02



MA03



MA04



MA05



MA06



MA07



MA08

9.4 EYESA



EY01

9.5 HUTMACHER 



HU01



HU02



HU03

9.6 TERMINALSEAL 



TSRS01



TSRS17



TSRS35



TSRS05



TSPS01



TSPS35



TSPRS06



TSPRS19D



TSP01

9.7 ICSEALS 



ICSS01

9.8 SALERNO 

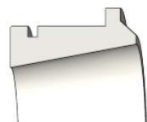


SA01R

9.9 ALIHYDRAULICS 

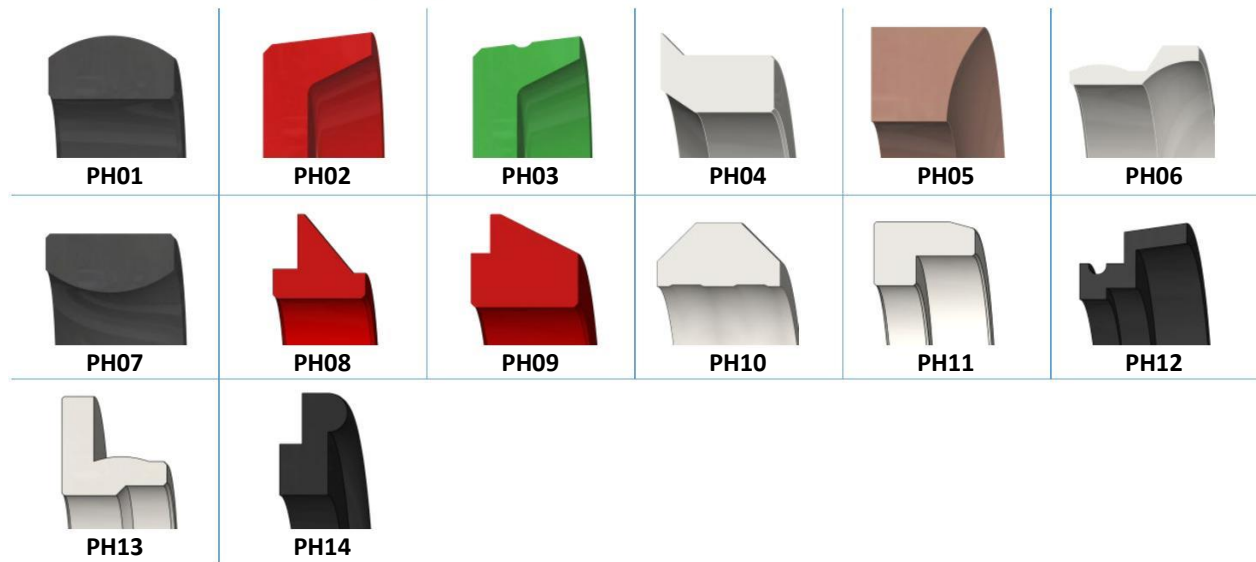


AH01



AH02

9.10 PIOTR HORZELA

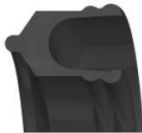


9.11 SEAL ENGINEERING



SEDS121

9.12 HST-SEALS



HST01

9.13 SEALTECH INDIA



STI01

9.14 PETECH



PET01



PET02

9.15 TTASANTO



TTA01



TTA02



TTA03

9.16 VEDSYSTEM



VSYS01

9.17 KADE



KAD01



KAD02

9.18 ERAKSHYDRO



EH01



EH02



EH03

9.19 INVAREX



INV01



INV02

9.20 SEALSOL 



SES01



SES02



SES03



SES04



SES05



SES06

9.21 TECHMAT 



TEM01



TEM02

9.22 ALRASHIDEEN 



ALR01

9.23 FPE SWAN 



FPES01



FPES02



FPES03



FPES04



FPES05



FPE06



FPES07



FPES08



FPES09



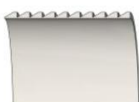
FPES10



FPES11



FPES12



FPES13



FPES14



FPES15

9.24 HENNLICH 



HEN01



HEN02



HEN03

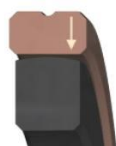
9.25 HSA 



HSAR11A



HSAR11B



HSAR11C



HSAR11E

9.26 POWERSEALS 



POW01

9.27 SUPREMERUBBER 



RS01



RS02

9.28 EARTH CITY 



EC01



EC02



EC03



EC04

9.29 STAMAR 



ST01

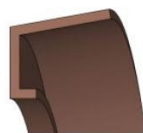
9.30 MESHKIN HALGHEH ENGINEERING CO.



MHEC01



MHEC02



MHEC03

9.31 BOGADI



MHEC01



MHEC02



MHEC03

10.0 ROD BUFFER SEALS



RB01



RB02



RB03



RB04



RB05



RB06



RB07

11.0 DOUBLE FACED

11.1 ROD



DFR01



DFR02

11.2 SYMMETRIC



DFS01



DFS02

11.3 PISTON



DFP01